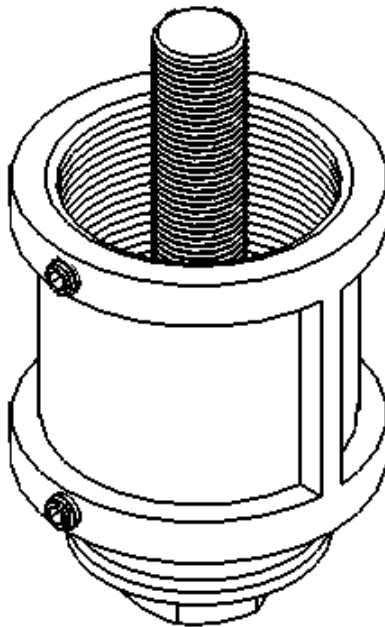


WMP

VIDEO MOUNT PRODUCTS

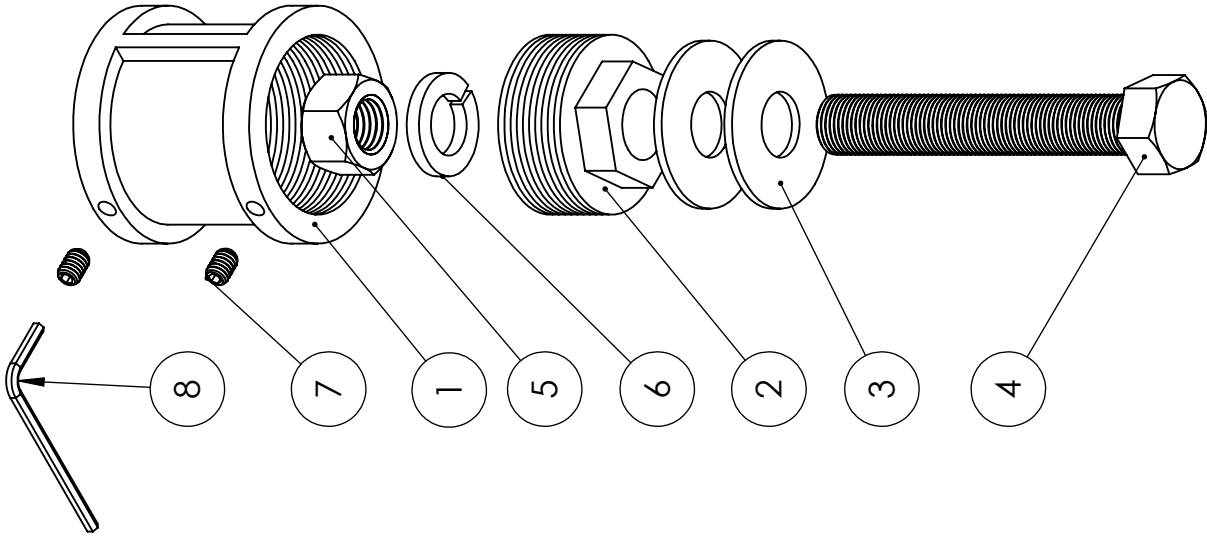
Instruction Sheet For:

AK-1 & AK-2

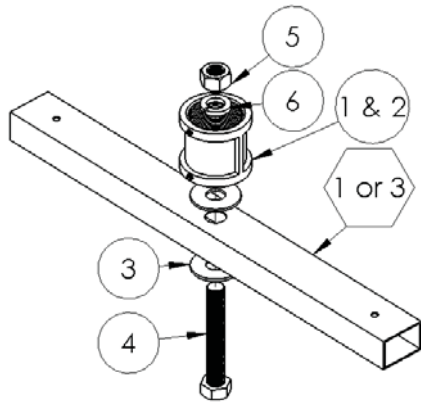


For more information, please contact us at:
345 Log Canoe Circle, Stevensville, Maryland 21666
Toll Free: 877.281.2169 Phone: 410.643.6390 Fax: 410.643.6615
www.videomount.com

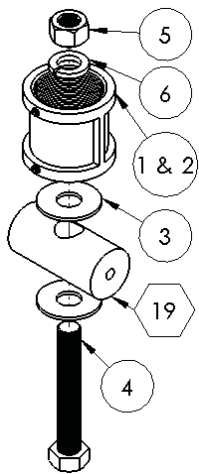
AK-1/AK-2



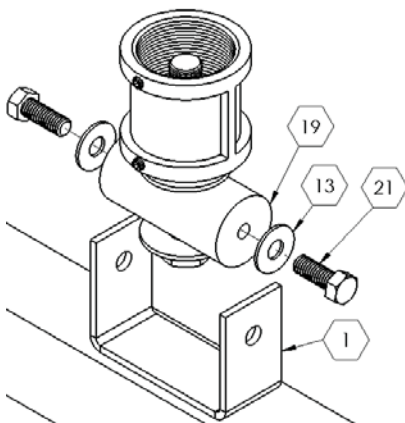
ITEM NO.	DESCRIPTION	QTY.
1	Female Pipe Couple	1
2	End Plug	1
3	Metal Washer	2
4	Hex Screw	1
5	Hex Nut	1
6	Spring Lock Washer	1
7	Brake Screw	2
8	M3 Allen Key	1



Step 3: Attaching the pipe couple to the force arm



Step 4: Attaching the pipe couple to the connector



Step 5: Attaching the connector

Step 1

Before starting, lay out all parts to your mount and match them to the parts list provided. Verify that you have all your parts before attempting to assemble the mount.

Note: AK-1 or AK-2 parts have circles around their part numbers while non-AK-1 or AK-2 parts have hexagons.

Step 2

The first step is to determine which mount you are attempting to use the AK-1 or AK-2 with.

If you plan to use the AK-1 with a VMP014/024 or an AK-2 with a VMP042/044 or VMP046/048 proceed to step 3. If you plan to use the AK-1 with a VMP036/038 proceed to step 4. If you plan to use an AK-1 with a LCD-2537C or an AK-2 with a LCD-1C proceed to step 6. If you plan to use an AK-1 with a PDM-C proceed to step 7. If you plan to use an AK-1 with a PM-1 or PM-2 proceed to step 8. If you plan to use an AK-1 with a PM-3 proceed to step 9.

Step 3

Place a washer ((3) AK-1 or AK-2) on top and bottom of the center hole of your mount's force arm ((1) VMP014/024 or (3) VMP042/044 or (3) VMP046/048). **Note: The AK-1 is used for the VMP014/024 and the AK-2 is used for the VMP042/044 and VMP046/048.**

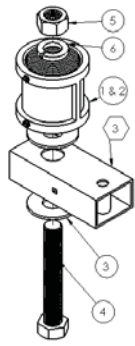
Insert the hex head screw ((4) AK-1 or AK-2) into the washers ((3) AK-1 or AK-2) and center hole of the force arm ((1) VMP014/024 or (3) VMP042/044 or (3) VMP046/048). Place the female pipe couple ((1) and (2) for both the AK-1 or AK-2) on top of the hex head screw ((4) AK-1 or AK-2) and use the hex nut ((5) AK-1 or AK-2) and spring washer ((6) AK-1 or AK-2) to secure the couple to the force arm ((1) VMP014/024 or (3) VMP042/044 or (3) VMP046/048). **Once finished proceed to step 11.**

Step 4

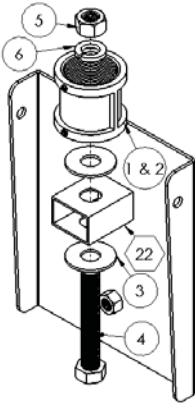
Place a washer ((3) AK-1) on the top and bottom of the large center hole in the connector ((19) VMP036/038). Insert the 5/8" screw ((4) AK-1) through the washers and connector. Place the female pipe couple ((1) and (2) AK-1) on top of the 5/8" screw ((4) AK-1) and secure the couple to the connector ((19) VMP036/038) using a spring washer ((6) AK-1) and hex nut ((5) AK-1).

Step 5

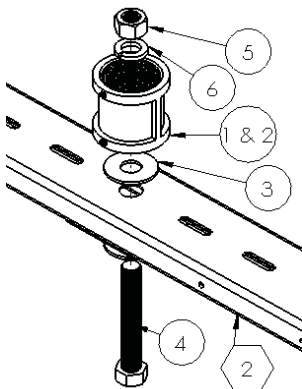
Attach the connector ((19) VMP036/038) to the force arm ((1) VMP036/038) using the 3/8" screws ((21) VMP036/038) and making sure that the washers ((13) VMP036/038) are between the uprights on the force arm ((1) VMP036/038) and the connector ((19) VMP036/038). **Once finished proceed to step 11.**



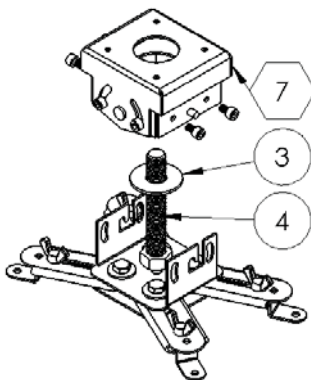
Step 6: Connecting the pipe couple to the support tube



Step 7: Attaching the swivel bracket to the pipe couple



Step 8: Attaching the couple to the master support



Step 9: Inserting the hex head screw into the projector assembly

Step 6

Place a washer ((3)AK-1 or AK-2) on top and bottom of the larger hole in the support tube ((3)LCD-2537C & LCD-1C) of your mount. *Note: The AK-1 is used for the LCD-2537C and the AK-2 is used for the LCD-1C.* Insert the hex head screw ((4)AK-1 or AK-2) through the support tube and washers. Secure the female pipe couple ((1) & (2) AK-1 or AK-2) to the top of the support tube using the spring washer ((6)AK-1 or AK-2) and hex nut ((5)AK-1 or AK-2).

Once finished proceed to step 11.

Step 7

Place a washer ((3)AK-1) on top and bottom of the welded square tubing in the inside of the swivel bracket B ((22) PDM-C). Insert the 5/8" screw ((4)AK-1) through the square tubing and washers. Secure the female pipe couple ((1) & (2)AK-1) to the top of the square tubing using the spring washer ((6) AK-1) and hex nut ((5) AK-1). **Once finished proceed to step 11.**

Step 8

Place a washer ((3)AK-1) on top and bottom of the center hole in the master support ((2) PM-1 or PM-2). Insert the 5/8" screw ((4) AK-1) through the master support and washers. Secure the female pipe couple ((1) & (2) AK-1) to the top of the master support using the spring washer ((6)AK-1) and hex nut ((5) AK-1).

Once finished proceed to step 11.

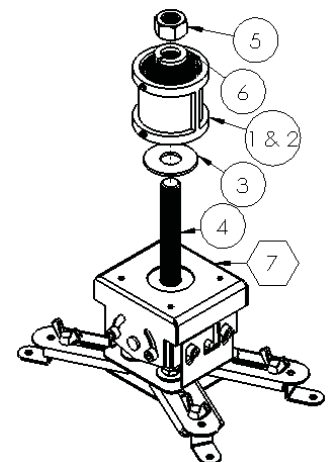
Step 9

First you must disassemble the projector assembly ((7) PM-3). Do this by removing the hex head cap screws in the side of the mount where there are "J" shaped cuts. Once this is done lift off the top of the assembly. Now place a washer ((3)AK-1) on the bottom of the hole in the top of the mount and insert the 5/8" screw ((4)AK-1) through the washer and the hole. Once this is accomplished reassemble the projector assembly.

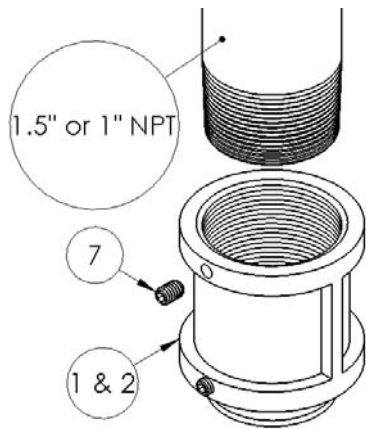
Step 10

Now place a washer ((3) AK-1) on top of the 5/8" screw ((4)AK-1). Attach the female pipe couple ((1) & (2) AK-1) to the top of the mount using the spring washer ((6)AK-1) and hex nut ((5)AK-1).

Once finished proceed to step 11.



Step 10: Attaching the couple to the projector assembly



Step 11: Connecting the NPT pipe

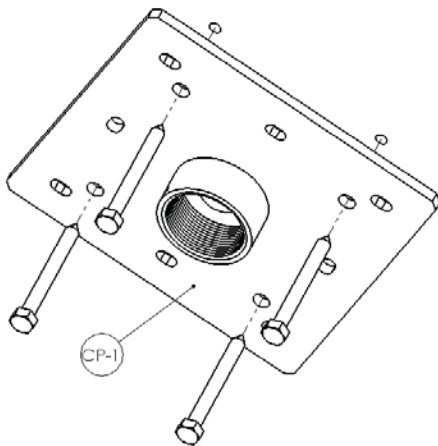
Step 11

To connect the 1.5" or 1" NPT to the female pipe couple (1 & 2) AK-1 or AK-2), screw one end into the top of couple and tighten the brake screw (7) AK-1 or AK-2) to prevent the pipe from turning in the couple.

Step 12

Mark the ceiling or desired mounting surface in preparation of installation of the CP-1. Pre-drill if necessary and mount the CP-1 to desired surface.

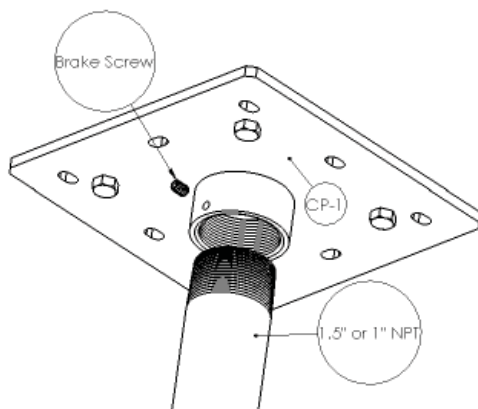
Warning: Please verify that your mounting surface will support the combined weight of your mount, mounting hardware, and monitor. Also verify that the mounting surface is safe to drill through. If in doubt, please contact a professional installer.



Step 12: Mounting the ceiling plate

Step 13

To connect the 1.5" or 1" NPT to the female pipe couple in the center of the CP-1, simply screw one end into the couple and tighten the brake screw to prevent the pipe from turning in the couple.



Step 13: Connect the pipe to the plate



Enjoy Your Mount!

WARNING: The installer of these products must verify that the mounting surface, ceiling or wall, will safely support the combined weight of all attached equipment and hardware. Video Mount Products will not be held liable for the improper use or installation of its products.