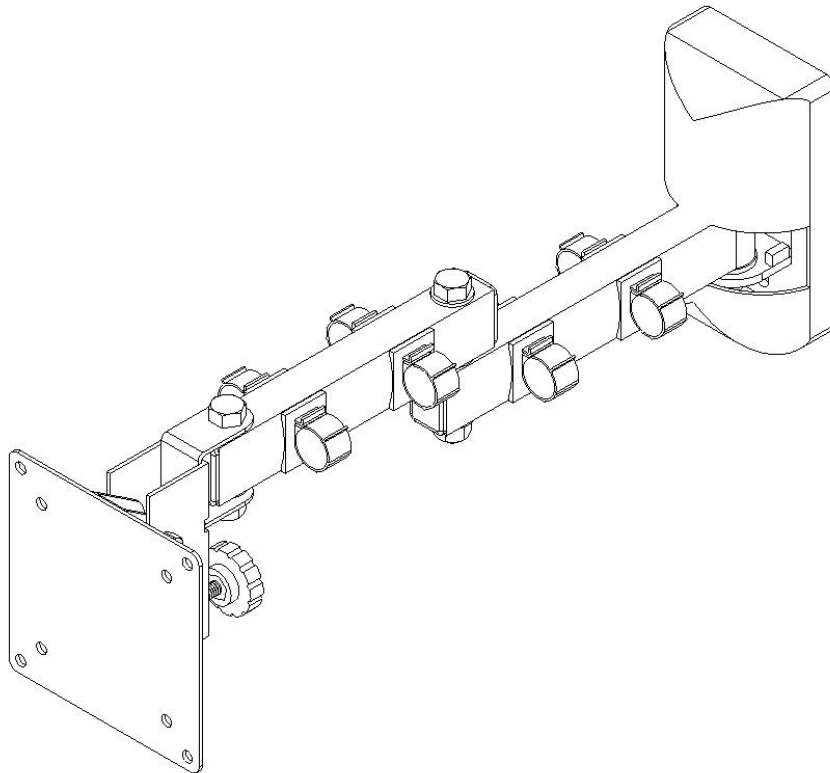


WMP

VIDEO MOUNT PRODUCTS

Instruction Sheet For:

LCD-1 & LCD-1B

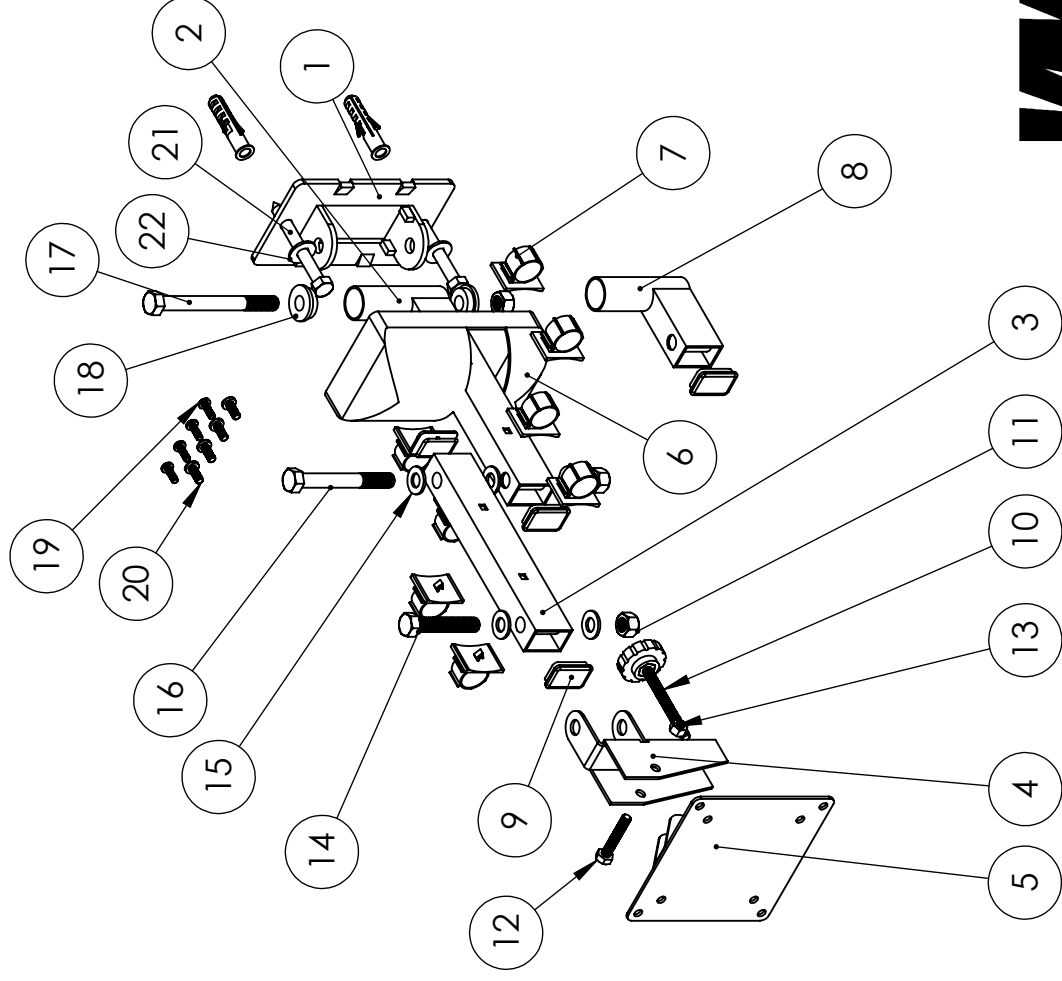


For use with flat panels 10" to 23" diagonally and weighing no more than 25 lbs.

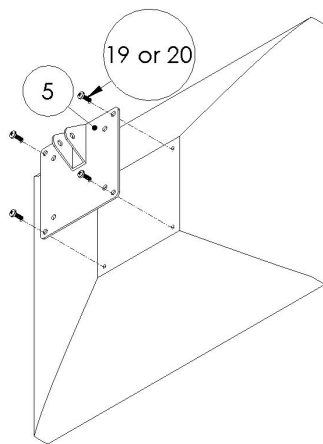
CAUTION: *This mount is intended for use only with the maximum weights indicated. Use with products heavier than the maximum weights indicated may result in instability causing possible injury.*

For more information, please contact us at:
345 Log Canoe Circle, Stevensville, Maryland 21666
Toll Free: 877.281.2169 Phone: 410.643.6390 Fax: 410.643.6615
www.videomount.com

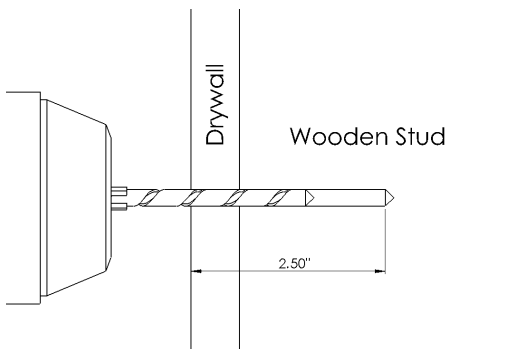
LCD-1



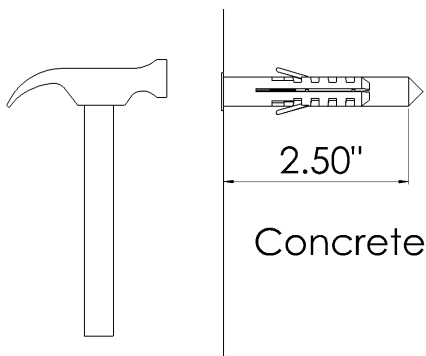
ITEM NO.	DESCRIPTION	QTY.
1	Wall Plate	1
2	Rear Force Arm	1
3	Front Force Arm	1
4	Swivel Bracket	1
5	Mounting Plate	1
6	Plastic Cover	1
7	Cable Clip	8
8	Shorter Force Arm	1
9	End Cap	4
10	Adjustable Screw 1/4" - 20UNC*L50mm	1
11	Nylon Nut 3/8"-16UNC	3
12	Screw M6*P1.0*L35	1
13	Nylon Nut M6*P1.0	1
14	Screw 3/8"-16UNC*L2"	1
15	Washer ϕ 3/8"* ϕ 19*T1.6mm	5
16	Metal Pin	1
17	Screw 3/8"-16UNC*L96mm	1
18	Plastic Flanges	2
19	Screw M4*P0.7*L12	4
20	Screw M5*P0.8*L12	4
21	Lag Screw ϕ 5/16"*L2.5"	2
22	Washer ϕ 8.3* ϕ 19*T1.6	2
23	Concrete Wall Anchor	2



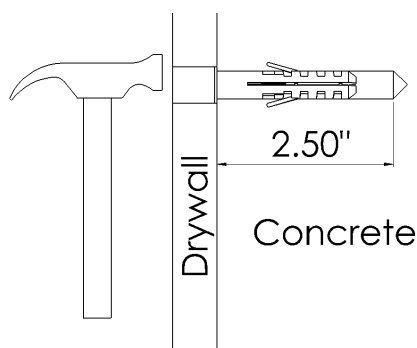
Step 2: Attaching the monitor to the mounting plate



Step 3: Attaching the wall plate to the wooden stud



Step 4: Setting the concrete anchor into bare concrete wall



Step 4: Setting the concrete anchor into drywall covered concrete wall (not evaluated by UL)

Step 1

Before starting, lay out all parts to your mount and match them to the parts list provided. Verify that you have all your parts before attempting to assemble the mount.

Step 2

Attach the mounting plate (5) to your LCD monitor using the M4 (19) or M5 (20) screws or as appropriate.

Step 3

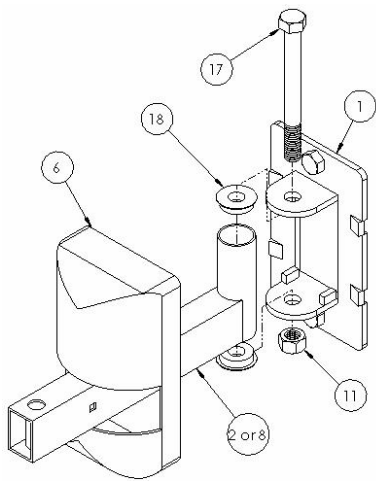
For Wood Stud Installation:

Mark the wall or desired mounting surface in preparation of installation of wall mounting plate (1). Pre drill pilot holes using a 7/32" drill bit to a depth of 2.5". Attach the wall plate (1) to the wooden stud using the 5/16" by 2.5" long lag screw (21) and washer (22) making sure the small rotation stoppers on the wall plate are towards the bottom. **WARNING: It is important that the mount is attached in the center and NOT the edges of the stud for safe support. Please verify that your mounting surface will support the combined weight of your mount, mounting hardware, and flat panel. Also verify that the mounting surface is safe to drill through. If in doubt or uncertain about any of the above, please contact a professional installer. Improper installation invalidates the UL listing of the product.**

Step 4

For Concrete Installation:

Mark the wall or desired mounting surface in preparation of installation of wall mounting plate (1). Pre drill pilot holes using a 3/8" or M10 drill bit to a depth of 2.5". Clean out the pre drilled hole with a vacuum or compressed air. Insert the concrete anchor (23) into the pre drilled hole and tap the anchor flush with the surface of the concrete with a hammer. **NOTE: If drywall is on the surface of the concrete the anchor must be countersunk so it is flush with the surface of the concrete below. Also note the dry wall thickness should not exceed 5/8". Concrete covered by drywall mounting condition has not been evaluated by UL.** Attach the wall plate (1) to the concrete wall by screwing the 5/16" by 2.5" long lag screw (21) and washer (22) into the concrete anchor (23) making sure the small rotation stoppers on the wall plate are towards the bottom. **WARNING: Please verify that your mounting surface will support the combined weight of your mount, mounting hardware, and flat panel. Also verify that the mounting surface is safe to drill through. If in doubt or uncertain about any of the above, please contact a professional installer. Improper installation invalidates the UL listing of the product.**



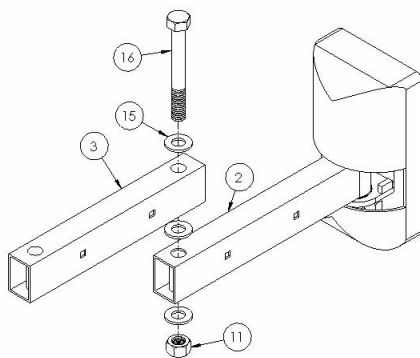
Step 5: Attaching the wall plate to the concrete wall

Step 5

Next determine which arm configuration you desire (double arm, single arm, or near flush) and locate the correct arms (8) for near flush, (2) for single arm, OR (2) and (3) for double arm). Attach the desired wall arm (2) or (8) or to the wall plate (1) using the 3/8" screw (17), plastic flanges (18) and nylon nut (11). Snap the plastic cover (6) onto the wall plate (1).

Step 6

If your application calls for the single arm or near flush mount configuration proceed to the next step. If your application calls for the double arm configuration, attach the front force arm (3) to the rear force arm (2) using the metal pin (16), washers (15) and the nylon nut (11).



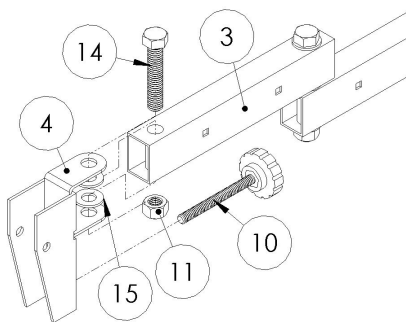
Step 6: Attaching the front force arm to the rear force arm

Step 7

Attach the swivel bracket (4) to the appropriate force arm ((2), (3), or (8) depending on your application) using a 3/8" screw (14), washers (15), and nylon nut (11). Insert adjustable screw (10) into the back of the swivel bracket (4) for use when tilting the monitor.

Step 8

Attach the mounting plate (5) to the swivel bracket (4) using the M6 screw (12) and nylon nut (13).

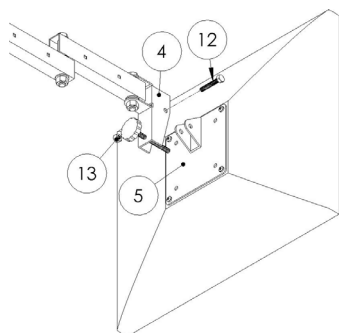


Step 7: Attaching the pivot bracket to the front force arm

Step 9

Insert end plugs into the force arms used by your application. Insert the cable clips by pushing the arrow ends into the square holes in the force arms.

Please verify that all nuts and screws are securely tightened.



Step 8: Attaching the mounting plate to the pivot bracket

Enjoy Your Mount!

WARNING: The installer of these products must verify that the mounting surface, ceiling or wall, will safely support the combined weight of all attached equipment and hardware. Video Mount Products will not be held liable for the improper use or installation of its products.